

# I Heard It Through The Grapevine

PIANO

Words and Music by  
**NORMAN J. WHITFIELD and BARRETT STRONG**  
 Arranged by **PETER BLAIR**

UNISON PATTERN  
 MOROCCAN ROCK

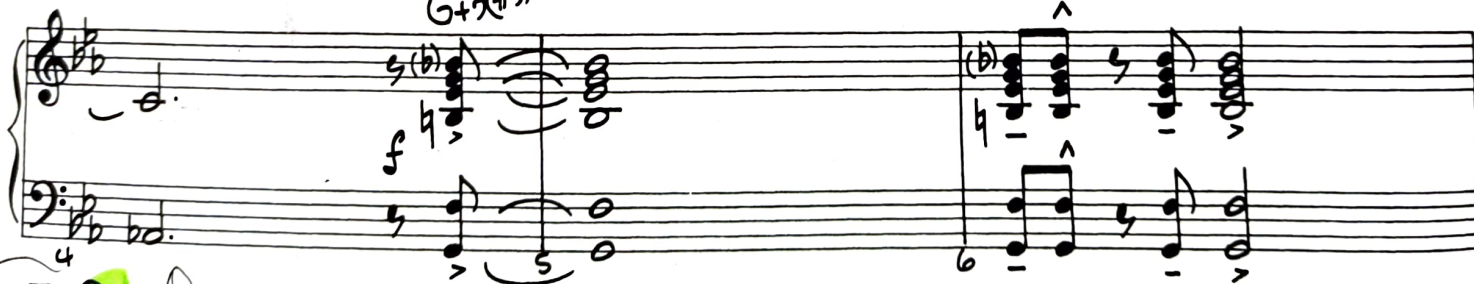


rise

MOROCCAN ROCK



G+2#9



Cm1 (comp.)

G

F7



Handwritten musical score for piano, measures 11-14. The key signature is B-flat major (two flats). Measure 11 has a  $Cm1$  chord. Measure 12 has a  $G$  chord. Measure 13 has an  $F7$  chord. Measure 14 has a  $F7$  chord. The bass line features eighth and sixteenth notes.

Handwritten musical score for piano, measures 15-18. Measure 15 has an  $Am1$  chord. Measure 16 has an  $F7$  chord. Measure 17 has a  $Cm1$  chord. Measure 18 has an  $F7$  chord. The bass line continues with eighth and sixteenth notes.

Handwritten musical score for piano, measures 19-22. Measure 19 has a  $Cm1$  chord. Measure 20 has an  $F7$  chord. Measure 21 has a  $Cm1$  chord. Measure 22 has an  $F7$  chord. The bass line continues with eighth and sixteenth notes.

Handwritten musical score for piano, measures 23-26. Measure 23 has a  $Cm1$  chord. Measure 24 has an  $F7$  chord. Measure 25 has a  $Cm1$  chord. Measure 26 has an  $F7$  chord. The bass line continues with eighth and sixteenth notes.

Handwritten musical score for piano, measures 27-31. Measure 27 has a  $Cm1$  chord. Measure 28 has an  $F7$  chord. Measure 29 has a  $Cm1$  chord. Measure 30 has an  $F7$  chord. Measure 31 has a  $G7(\#9)$  chord. The bass line continues with eighth and sixteenth notes.

Handwritten musical score for piano, measures 32-36. Measure 32 has a  $Cm1$  chord. Measure 33 has a  $Cm1$  chord. Measure 34 has a  $Cm1$  chord. Measure 35 has an  $F9$  chord. Measure 36 has an  $F9$  chord. The bass line continues with eighth and sixteenth notes.



Handwritten musical score for piano, measures 37-40. The key signature is B-flat major (two flats). The first system shows a treble clef with a  $Cm17$  chord and a bass clef with a melodic line. The second system shows a treble clef with a  $F9$  chord and a bass clef with a melodic line.

Handwritten musical score for piano, measures 41-44. The key signature is B-flat major. The first system shows a treble clef with a  $Cm17$  chord and a bass clef with a melodic line. The second system shows a treble clef with a  $F9$  chord and a bass clef with a melodic line.

Handwritten musical score for piano, measures 45-48. The key signature is B-flat major. The first system shows a treble clef with a  $Cm17$  chord and a bass clef with a melodic line. The second system shows a treble clef with a  $F9$  chord and a bass clef with a melodic line.

Handwritten musical score for piano, measures 49-52. The key signature is B-flat major. The first system shows a treble clef with a  $f$  dynamic and a bass clef with a melodic line. The second system shows a treble clef with a  $Dim.$  dynamic and a bass clef with a melodic line.

Handwritten musical score for piano, measures 53-56. The key signature is B-flat major. The first system shows a treble clef with a  $Dim.$  dynamic and a bass clef with a melodic line. The second system shows a treble clef with a  $Dim.$  dynamic and a bass clef with a melodic line.

Handwritten musical score for piano, measures 57-59. The key signature is B-flat major. The first system shows a treble clef with a  $Cm1$  chord and a bass clef with a melodic line. The second system shows a treble clef with a  $G+7(\#9)$  chord and a bass clef with a melodic line. The third system shows a treble clef with a  $Cm1$  chord and a bass clef with a melodic line.